

College of Southern Nevada

Accountability Summary Packet June 2010

Contents

1. Fall Enrollment Five-Year Trends 2005-09
2. Summary Accountability Report 2005-09
3. Graduates (tables) 2005-09
May 2010 graduation data is not yet final
4. Next Term (Fall-to-Spring) Persistence Rates by Demographic 2005-09
 - a. All Students
 - b. First-Year Students
5. Next Year (Fall-to-Fall) Persistence Rates by Demographic 2005-09
 - a. All Students
 - b. First-Year Students
6. Fall Term Course Retention Rates by Demographic 2005-09
 - a. All Students
 - b. First-Year Students
7. Fall Term Course Success Rates by Demographic 2005-09
 - a. All Students
 - b. First-Year Students

Last updated: 6/08/2010

Other institutional reports are available at <http://www.csn.edu/csnstats>

Prepared by CSN Institutional Research

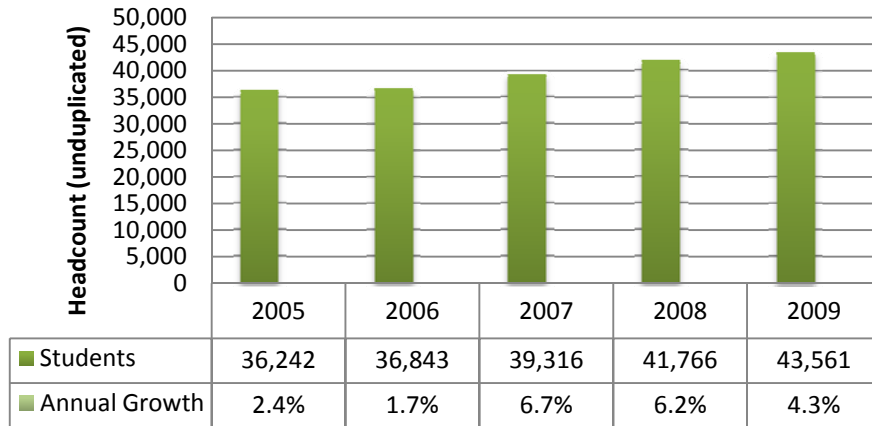
irp@csn.edu

702-651-7327

College of Southern Nevada Fall Enrollment Five-Year Trends (2005-2009)

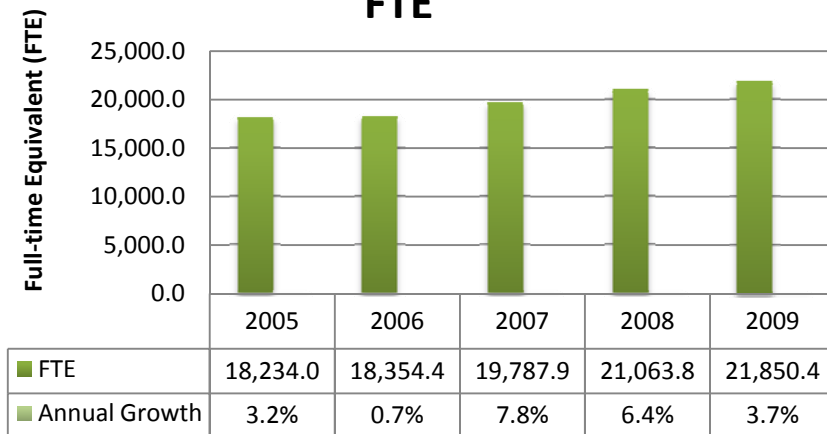
HEADCOUNT

CSN Fall Enrollment - Headcount



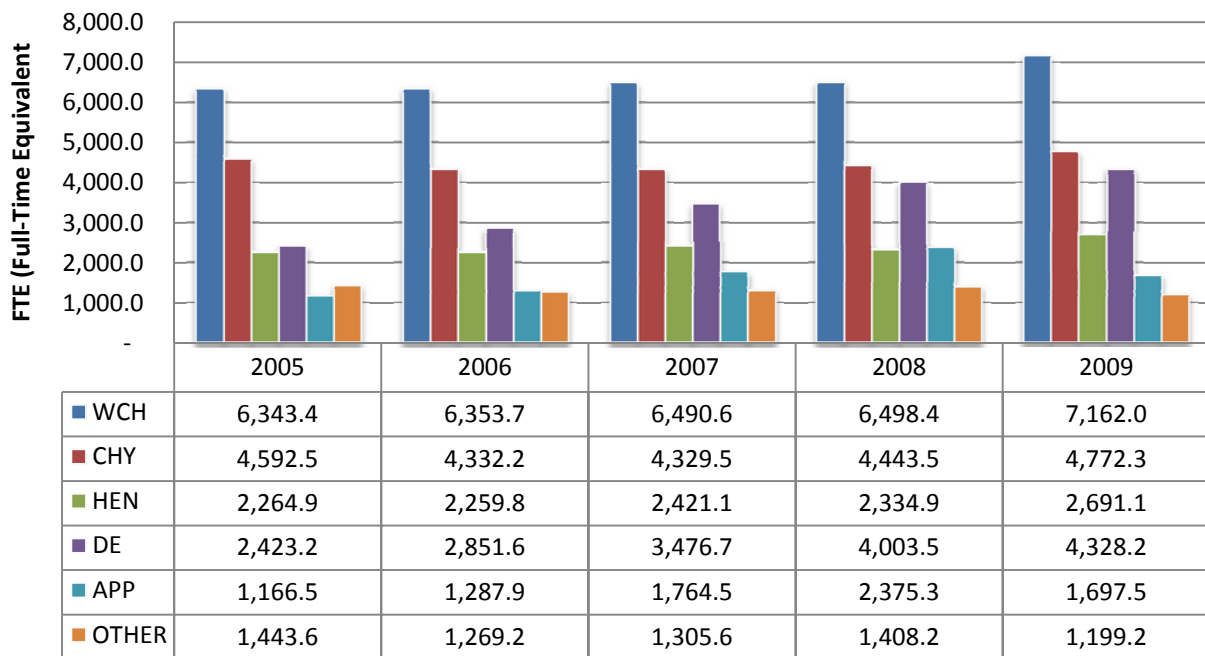
FTE (Full-Time Equivalent)

CSN Fall Enrollment - FTE



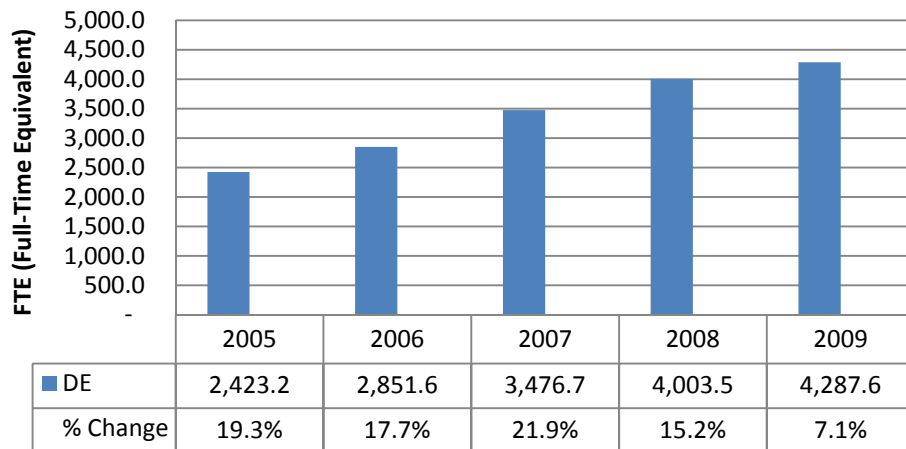
ENROLLMENT BY CAMPUS - FTE

CSN Fall Enrollment by Campus - FTE



ONLINE/DISTANCE EDUCATION ENROLLMENT – FTE

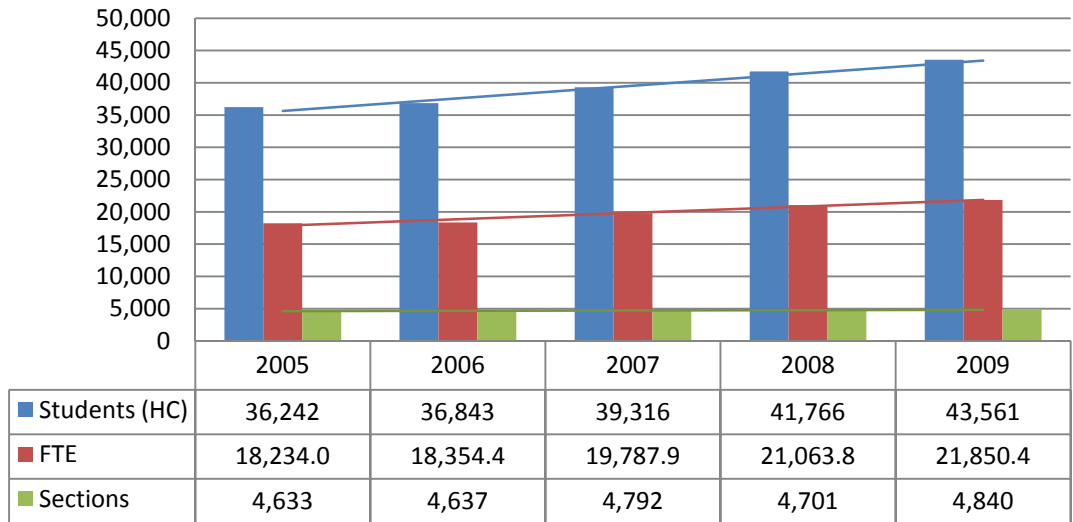
CSN Fall Enrollment in Online/Distance Education - FTE



*Final data (2005-2009). Growth from 2005-2009 is 77%.

ENROLLMENT AND SECTIONS OFFERED

**CSN Fall Enrollment -
Enrollment & Sections**



College of Southern Nevada - Summary Accountability Report
Last revised 6/29/2010

Enrollment	Fall 2005	Fall 2006	Fall 2007	Fall 2008	Fall 2009	5-yr Chg
Headcount (unduplicated)	36,242	36,843	39,316	41,766	43,561	20.2%
FTE (full-time equivalent)	18,234.0	18,354.4	19,787.9	21,063.8	21,850.4	19.8%

Student Characteristics	Fall 2005	Fall 2006	Fall 2007	Fall 2008	Fall 2009
Percent credit students enrolled part-time	73.8%	74.6%	74.4%	73.9%	73.0%
Underprepared (enrolled in 1 or more developmental class [ENG, READ, SPEL, VOC, BIOL, MATH])	13.9%	14.3%	13.7%	13.3%	12.5%

Annualized Enrollment (summer not included)	AY 05-06	AY 06-07	AY 07-08	AY 08-09	AY 09-10*	5-yr Chg
Headcount Annualized Average						
Credit Students	35,679	36,540	39,205	41,367	43,614	22.2%
Non-credit Students (only those recorded in SIS)	4,313	3,583	3,472	2,821	2,673	-38.0%
FTE Annualized Average	17,859.3	18,155.3	19,579.0	21,011.3	21,993.1	23.1%

Enrollment in Online Courses	Fall 2005	Fall 2006	Fall 2007	Fall 2008	Fall 2009	5-yr Chg
Enrollment (duplicated)	12,241	14,258	17,481	19,940	21,500	75.6%
FTE	2,422.9	2,851.6	3,476.7	4,003.5	4,287.6	77.0%
Programs online		17	28	28	28	
Online students (taking at least one DE class)	7,190	8,013	9,638	11,028	11,908	65.6%

Student Success* - Developmental Crses	Fall 2005	Fall 2006	Fall 2007	Fall 2008	Fall 2009	5-yr Chg
Developmental English						
Enrollment (duplicated)	945	1,282	1,543	1,178	1,261	33.4%
Course retention (Grades A-F or P)	80.1%	76.2%	72.9%	78.7%	79.8%	
Successful completion (*Success = Grades A-C or P)	60.4%	66.5%	54.8%	62.2%	62.6%	

Developmental Math	Fall 2005	Fall 2006	Fall 2007	Fall 2008	Fall 2009	5-yr Chg
Enrollment (duplicated)	4,544	4,560	4,455	4,822	4,389	-3.4%
Course retention (Grades A-F or P)	71.5%	70.3%	75.0%	81.8%	82.7%	
Successful completion (*Success = Grades A-C or P)	48.7%	45.9%	54.7%	58.2%	57.0%	

ESL	Fall 2005	Fall 2006	Fall 2007	Fall 2008	Fall 2009	5-yr Chg
Enrollment (duplicated)	2,478	2,731	2,716	2,686	2,412	-2.7%
Course retention (Grades A-F or P)	88.4%	89.0%	90.2%	90.6%	91.9%	
Successful completion (*Success = Grades A-C or P)	70.2%	71.3%	71.8%	73.3%	76.3%	

Persistence	F05-S06	F06-S07	F07-S08	F08-S09	F09-S10
Fall to Spring Persistence (AY Fall-Spring)					
All Students	61.8%	61.9%	63.8%	64.5%	64.9%
First-Year Students					57.9%
Fall to Fall Persistence (Prior Fall-AY Fall)					
All Students	44.1%	44.0%	45.7%	46.6%	46.6%
First-Year Students	36.4%	38.0%	39.3%	42.3%	42.7%

Effective Use of Public Funding^	FY 05-06	FY 06-07	FY 07-08	FY 08-09 ^
State Funding per FTE (budgeted)	6,038.94	6,318.53	6,752.71	4,310.00
Pct Expenditure on Instruction	54.3%	54.5%	54.1%	49.3%

^ IPEDS Financial Reported Data (FY2008)

Taxpayer Rate of Return	15.10%
Student Rate of Return	19.50%
CSN total economic impact	\$1,638,473,000.00

Space Utilization - Fall 2007 (% of Standard)	Fall 2007 Afternoon	Fall 2007 Evening
Classrooms (State standard: 67% of available hours)	117%	116%
Class Laboratories (State standard: 44% of available hours)	87%	108%
Saturday and Sunday Use	9%	1%
Total Square Feet per Student		22
System Average Square Feet per Student		45.5

College of Southern Nevada - Summary Accountability Report Updated 6/8/2010
 Licensure/certification exam pass rates - Health Sciences

Pass Rate by Program	AY 04-05	AY 05-06	AY 06-07	AY 07-08	AY 08-09
Surgical Technology					
- exam (CST)				50%	100%
Cardiorespiratory					
- certified respiratory therapist (CRT)		100%	94%	94%	94% (100%)
- written registry therapist test (WRT)		100%	93%	100%	79% (93%)
- clinical simulation exam (CSE)				64%	86% (93%)
- certified cardiographic technician (licensure)		100%	100%		100%
Emergency Medical Services/ Paramedic Medicine					
- national exam EMT-B (PNR)	100%	100%		87%	74%
- EMT-I					88%
- EMT-P					100%
Veterinary Technology					
- licensure				100%	100%
- exam					88%
- national board exams			93%		
- state board exams			100%		
Health Information Technology					
- national exam (RHIT)	100%	100%		100%	100%
Physical Therapy Assistant					
- national licensure exam (FSBPT)	100%	78%		87.5%	75% (88%)
Occupational Therapy					
- national exam (NBCOT)	100%	100%		100%	no candidates
Massage Specialist					
- board exam (NCETMB)		90%	78%		
Medical Office Assisting					
- national certification exam		53%	83%		
Medical Laboratory Technology					
- national certification (ASCP)	100%	100%		0%	100%
Phlebotomy					
- national certification (ASCP)					72%
Dental Assisting					
- national exam (CDA)					100%
Dental Hygiene - AS					
- national board exam		96%	96%		
- certification exam				100%	100%
- licensure exam				91%	100%
- licensure					100%
Registered Nursing					
- exam (NCLEX-RN)	88%	87%	80%	86.5%	87%
Practical Nursing					
- exam (NCLEX-PN)	85%	80%	80%		90%
Certified Nursing Assistant					
- exam (CNA)					94%
Radiation Therapy					
- national licensure exam (ARRT)		80%		71.4%	68% (99%)
Diagnostic Medical Sonography					
- ultrasound and instrumentation exams			100%		
- abdominal exam				100%	100%
- adult echocardiography exam			100%	75%	
- cardiovascular principles & instrumentation exam			67%	100%	80%
- ultrasound physics exam				83%	
- vascular principles & instrumentation exam				75%	
- vascular technology exam				100%	
- OB-GYN exam					100%
<i>(numerous speciality certifications; registry exam not required in NV)</i>					
Ophthalmic Dispensing					
- national ABO (American Board of Ophthalmology)			95%	97%	
- national contact lens exam			92%	95%	
- NV state board exam				100%	

Note: (%) indicates second attempt pass rate

ABO = American Board of Opticianry
 ARRT = American Registry of Radiologic Technologists
 ASCP = American Society for Clinical Pathology
 CDA = Certified Dental Assisting
 CMA = Certified Medical Assisting
 CNA = Certified Nursing Assistant
 CRT = Certified Respiratory Therapist WRRT = Written Registry test CSE = Clinical Simulation exam
 CST = Certified Surgical Technologist
 FSBPT = Federal and State Boards of Physical Therapy
 NBCOT = National Board for certification of Occupational Therapists
 NCETMB = National Certification Board for Therapeutic Massage & Bodywork
 NCLE = National Contact Lens Filters exam
 NCLEX = National Council Licensure Examination
 PBT = Phlebotomy Technician
 PNR = Paramedic/EMT National Registry exam
 RHIT = Registered Healthy Information Technician

College of Southern Nevada
 Graduates 2004-2010

* Preliminary graduation data for Spring 2010 as of 6/22/2010

Graduates (Percentages) by Ethnicity

	GY0506	GY0607	GY0708	GY0809	GY09-10*
African American	10%	8%	5%	8%	7%
Asian	14%	15%	9%	16%	12%
Caucasian	54%	55%	33%	53%	44%
Hawaiian/ Pacific Islander	1%	1%	1%	1%	1%
Hispanic	13%	12%	10%	14%	16%
Native American	1%	1%	1%	1%	1%
Multi-ethnic	n/a	n/a	n/a	n/a	3%
Unknown	7%	8%	42%	8%	15%

Graduates (Percentages) by Gender

	GY0506	GY0607	GY0708	GY0809	GY09-10*
F	70%	67%	65%	65%	61%
M	30%	33%	35%	35%	39%

NOTES

GY=Grad Year (August, December and the following May)

Graduates = Unduplicated counts of graduating students.

Awards = degrees and certificates granted. Awards are not listed on this report.

A student may receive more than one award, so the number of awards on other reports may be higher than the number of graduates.

Rounding errors may occur.

* May 2010 graduation data is not final. GY0910 data may change.

Institutional Research, last updated & revised 6/22/2010.

07-08 data revised; 08-09 finalized

Graduates (Totals)

	GY0405	GY0506	GY0607	GY0708	GY0809	GY09-10*
	1,462	1,587	1,693	1,738	1,786	1,844
% Annual Change		9%	7%	3%	3%	3%

Degrees/Certificates

	GY0405	GY0506	GY0607	GY0708	GY0809	GY09-10*
	1,547	1,739	1,812	1,865	1,891	1,953
% Annual Change		12%	4%	3%	1%	3%

Graduates (Totals)

	GY0506	GY0607	GY0708	GY0809	GY09-10*
African American	160	137	89	140	135
Asian	227	249	162	287	227
Caucasian	861	934	567	948	812
Hawaiian/ Pac. Islander	9	17	11	17	27
Hispanic	204	206	171	246	291
Native American	21	12	10	12	20
Multi-ethnic	n/a	n/a	n/a	n/a	51
Unknown	105	138	728	136	281

Graduates (Totals)

	GY0506	GY0607	GY0708	GY0809	GY09-10*
F	1,108	1,129	1,136	1,156	1,125
M	479	564	602	630	719

College of Southern Nevada All Students

Fall-to-Spring Persistence Rate

	F04-S05	F05-S06	F06-S07	F07-S08	F08-S09
	61.9%	61.8%	61.9%	63.9%	64.5%

Fall-to-Spring Persistence Rate by Ethnicity

	F04-S05	F05-S06	F06-S07	F07-S08	F08-S09
African American	60.1%	58.5%	58.5%	60.2%	64.2%
Asian	65.9%	66.4%	66.8%	66.6%	68.0%
Caucasian	62.2%	61.4%	62.0%	64.0%	65.2%
Hawaiian/Pacific Islander	63.9%	66.7%	61.2%	66.1%	66.1%
Hispanic	60.3%	60.7%	60.7%	63.4%	61.9%
Native American	62.9%	64.6%	63.8%	64.5%	61.4%
<i>Resident Alien</i>	55.6%	85.7%	66.7%	25.0%	66.7%
Unknown	60.8%	63.2%	61.8%	64.6%	63.3%

Fall-to-Spring Persistence Rate by Gender

	F04-S05	F05-S06	F06-S07	F07-S08	F08-S09
Female	62.8%	62.6%	62.7%	63.5%	65.2%
Male	60.8%	60.9%	61.0%	64.2%	63.7%

Student Persistence Fall to Spring

Persistence is a measure of endurance by students in their continued progress toward the completion of an educational goal or training objective.

It shows the percentage of students enrolled in a fall semester and who re-enroll in the subsequent spring semester.

Institutional Research, revised 5/14/2010

College of Southern Nevada First-Year Students Persisting to Spring Semester

Fall-to-Spring Persistence Rate

	F04-S05	F05-S06	F06-S07	F07-S08	F08-S09
First-Year Students	54.1%	54.7%	54.4%	58.3%	59.4%

Fall-to-Spring Persistence Rate by Ethnicity

First-Year Students	F04-S05	F05-S06	F06-S07	F07-S08	F08-S09
African American	50.6%	50.1%	50.1%	51.8%	58.0%
Asian	60.1%	61.7%	61.2%	62.9%	67.0%
Caucasian	53.9%	52.2%	55.0%	58.5%	60.0%
Hawaiian/Pacific Islander	60.3%	63.9%	51.4%	64.2%	62.1%
Hispanic	52.9%	53.8%	54.5%	58.3%	57.7%
Native American	56.8%	65.7%	51.0%	57.3%	52.1%
Unknown	54.1%	59.8%	49.8%	58.5%	54.4%

Fall-to-Spring Persistence Rate by Gender

First-Year Students	F04-S05	F05-S06	F06-S07	F07-S08	F08-S09
Female	54.7%	56.0%	54.6%	57.3%	61.1%
Male	53.5%	53.3%	54.1%	59.2%	57.9%

Student Persistence Fall to Spring

Persistence is a measure of endurance by students in their continued progress toward the completion of an educational goal or training objective.

It shows the percentage of students enrolled in a fall semester and who re-enroll in the subsequent spring semester.

Institutional Research, revised 5/14/2010

First-Year Persistence to Spring Semester

Fall-to-Spring Persistence Rate

First-Year Students	F04-S05	rate	F05-S06	rate	F06-S07	rate	F07-S08	rate	F08-S09	rate
	<i>All</i>	54.1%	<i>All</i>	54.7%	<i>All</i>	54.4%	<i>All</i>	58.3%	<i>All</i>	59.4%
	<i>Deg</i>	63.9%	<i>Deg</i>	63.9%	<i>Deg</i>	65.3%	<i>Deg</i>	65.0%	<i>Deg</i>	66.0%
	<i>Non</i>	47.8%	<i>Non</i>	49.4%	<i>Non</i>	43.5%	<i>Non</i>	51.8%	<i>Non</i>	47.8%

Fall-to-Spring Persistence Rate by Ethnicity

First-Year Students	F04-S05	rate	F05-S06	rate	F06-S07	rate	F07-S08	rate	F08-S09	rate
African American	<i>All</i>	50.6%	<i>All</i>	50.1%	<i>All</i>	50.1%	<i>All</i>	51.8%	<i>All</i>	58.0%
	<i>Deg</i>	59.2%	<i>Deg</i>	55.9%	<i>Deg</i>	57.5%	<i>Deg</i>	55.4%	<i>Deg</i>	64.4%
	<i>Non</i>	42.0%	<i>Non</i>	43.5%	<i>Non</i>	37.4%	<i>Non</i>	45.1%	<i>Non</i>	40.7%
Asian	<i>All</i>	60.1%	<i>All</i>	61.7%	<i>All</i>	61.2%	<i>All</i>	62.9%	<i>All</i>	67.0%
	<i>Deg</i>	72.1%	<i>Deg</i>	75.2%	<i>Deg</i>	72.6%	<i>Deg</i>	73.0%	<i>Deg</i>	76.1%
	<i>Non</i>	47.5%	<i>Non</i>	51.5%	<i>Non</i>	48.4%	<i>Non</i>	50.8%	<i>Non</i>	51.2%
Caucasian	<i>All</i>	53.9%	<i>All</i>	52.2%	<i>All</i>	55.0%	<i>All</i>	58.5%	<i>All</i>	60.0%
	<i>Deg</i>	64.2%	<i>Deg</i>	62.3%	<i>Deg</i>	67.3%	<i>Deg</i>	65.5%	<i>Deg</i>	67.2%
	<i>Non</i>	47.5%	<i>Non</i>	46.8%	<i>Non</i>	42.5%	<i>Non</i>	51.8%	<i>Non</i>	47.5%
Hawaiian/ Pac. Islander	<i>All</i>	60.3%	<i>All</i>	63.9%	<i>All</i>	51.4%	<i>All</i>	64.2%	<i>All</i>	62.1%
	<i>Deg</i>	62.9%	<i>Deg</i>	66.3%	<i>Deg</i>	57.6%	<i>Deg</i>	75.7%	<i>Deg</i>	72.0%
	<i>Non</i>	57.9%	<i>Non</i>	62.3%	<i>Non</i>	42.1%	<i>Non</i>	52.4%	<i>Non</i>	40.8%
Hispanic	<i>All</i>	52.9%	<i>All</i>	53.8%	<i>All</i>	54.5%	<i>All</i>	58.3%	<i>All</i>	57.7%
	<i>Deg</i>	60.4%	<i>Deg</i>	66.9%	<i>Deg</i>	64.7%	<i>Deg</i>	65.7%	<i>Deg</i>	61.2%
	<i>Non</i>	48.5%	<i>Non</i>	45.8%	<i>Non</i>	45.3%	<i>Non</i>	51.6%	<i>Non</i>	51.5%
Native American	<i>All</i>	56.8%	<i>All</i>	65.7%	<i>All</i>	50.9%	<i>All</i>	57.3%	<i>All</i>	52.1%
	<i>Deg</i>	71.4%	<i>Deg</i>	70.4%	<i>Deg</i>	59.7%	<i>Deg</i>	58.0%	<i>Deg</i>	57.1%
	<i>Non</i>	47.8%	<i>Non</i>	60.0%	<i>Non</i>	37.8%	<i>Non</i>	56.4%	<i>Non</i>	35.7%
Unknown	<i>All</i>	54.1%	<i>All</i>	59.8%	<i>All</i>	49.8%	<i>All</i>	58.5%	<i>All</i>	54.4%
	<i>Deg</i>	66.8%	<i>Deg</i>	60.4%	<i>Deg</i>	62.3%	<i>Deg</i>	64.9%	<i>Deg</i>	64.5%
	<i>Non</i>	50.6%	<i>Non</i>	59.6%	<i>Non</i>	44.3%	<i>Non</i>	55.4%	<i>Non</i>	44.4%

Fall-to-Spring Persistence Rate by Gender

First-Year Students	F04-S05	rate	F05-S06	rate	F06-S07	rate	F07-S08	rate	F08-S09	rate
Female	<i>All</i>	54.7%	<i>All</i>	56.0%	<i>All</i>	54.6%	<i>All</i>	57.3%	<i>All</i>	61.1%
	<i>Deg</i>	65.8%	<i>Deg</i>	65.6%	<i>Deg</i>	65.7%	<i>Deg</i>	66.3%	<i>Deg</i>	69.5%
	<i>Non</i>	45.3%	<i>Non</i>	49.1%	<i>Non</i>	42.3%	<i>Non</i>	46.6%	<i>Non</i>	47.2%
Male	<i>All</i>	53.5%	<i>All</i>	53.3%	<i>All</i>	54.1%	<i>All</i>	59.2%	<i>All</i>	57.9%
	<i>Deg</i>	61.1%	<i>Deg</i>	61.4%	<i>Deg</i>	64.8%	<i>Deg</i>	63.7%	<i>Deg</i>	63.0%
	<i>Non</i>	49.9%	<i>Non</i>	49.7%	<i>Non</i>	44.7%	<i>Non</i>	55.6%	<i>Non</i>	48.3%

Student Persistence Fall to Spring

Persistence is a measure of endurance by students in their continued progress toward the completion of an educational goal or training objective.

It measures the percentage of students enrolled in a fall semester who re-enroll in the subsequent spring semester.

All = First-year students are students who start CSN in the summer or fall semester.

For this report, excludes those who graduate before the spring semester.

Deg = Degree-seeking students have declared a major or the intent to transfer. Only degree-seeking students are eligible for financial aid.

Non = Non-degree-seeking students have not declared a major or

they have declared the intent to take classes for basic skills, job advancement, or personal enrichment.

College of Southern Nevada All Students

Fall-to-Fall Persistence Rate

	F04-F05	F05-F06	F06-F07	F07-F08	F08-F09
	44.1%	44.0%	45.7%	46.6%	46.6%

Fall-to-Fall Persistence Rate by Ethnicity

	F04-F05	F05-F06	F06-F07	F07-F08	F08-F09
African American	39.6%	39.3%	42.1%	41.5%	43.9%
Asian	49.8%	50.9%	50.8%	50.1%	48.9%
Caucasian	43.6%	42.8%	45.2%	45.9%	46.7%
Hawaiian/Pacific Islander	44.6%	47.4%	45.8%	49.4%	51.6%
Hispanic	44.3%	45.0%	46.3%	48.3%	46.6%
Native American	48.0%	44.2%	45.3%	49.7%	42.9%
Unknown	44.7%	44.9%	45.5%	47.4%	46.2%

Fall-to-Fall Persistence Rate by Gender

	F04-F05	F05-F06	F06-F07	F07-F08	F08-F09
Female	45.2%	44.5%	46.8%	46.1%	47.3%
Male	42.8%	43.3%	44.6%	47.2%	46.0%

Student Persistence Fall to Fall

Persistence is a measure of endurance by students in their continued progress toward the completion of an educational goal or training objective.

It measures the percentage of students enrolled in a fall semester who re-enroll in the subsequent fall semester.

Institutional Research, revised 5/14/2010

College of Southern Nevada First-Year Students Persisting to Second Year

Fall-to-Fall Persistence Rate

First-Year Students	F04-F05	F05-F06	F06-F07	F07-F08	F08-F09
	36.4%	38.0%	39.3%	42.3%	42.7%

Fall-to-Fall Persistence Rate by Ethnicity

First-Year Students	F04-F05	F05-F06	F06-F07	F07-F08	F08-F09
African American	28.5%	30.0%	33.2%	33.4%	38.6%
Asian	45.8%	49.0%	48.3%	49.1%	49.6%
Caucasian	35.4%	35.2%	40.0%	41.1%	43.4%
Hawaiian/Pacific Islander	37.7%	46.4%	38.4%	45.4%	47.2%
Hispanic	38.7%	39.1%	39.3%	44.8%	42.0%
Native American	43.2%	48.5%	37.5%	48.3%	36.1%
Unknown	35.2%	41.0%	33.9%	43.5%	37.5%

Fall-to-Fall Persistence Rate by Gender

First-Year Students	F04-F05	F05-F06	F06-F07	F07-F08	F08-F09
Female	36.9%	38.6%	40.1%	40.1%	43.5%
Male	35.9%	37.3%	38.5%	44.3%	41.9%

Student Persistence Fall to Fall

Persistence is a measure of endurance by students in their continued progress toward the completion of an educational goal or training objective.

It measures the percentage of students enrolled in a fall semester who re-enroll in the subsequent fall semester.

Institutional Research, revised 5/14/2010

First-Year Persistence to Second Year

College of Southern Nevada First-Year Students Persisting to Second Year

Fall-to-Fall Persistence Rate

First-Year Students	F04-F05	rate	F05-F06	rate	F06-F07	rate	F07-F08	rate	F08-F09	rate
	<i>All</i>	36.4%	<i>All</i>	38.0%	<i>All</i>	39.3%	<i>All</i>	42.3%	<i>All</i>	42.7%
	<i>Deg</i>	42.8%	<i>Deg</i>	45.5%	<i>Deg</i>	47.9%	<i>Deg</i>	48.4%	<i>Deg</i>	50.8%
	<i>Non</i>	32.3%	<i>Non</i>	33.7%	<i>Non</i>	30.8%	<i>Non</i>	36.5%	<i>Non</i>	28.4%

Fall-to-Fall Persistence Rate by Ethnicity

First-Year Students	F04-F05	rate	F05-F06	rate	F06-F07	rate	F07-F08	rate	F08-F09	rate
African American	<i>All</i>	28.5%	<i>All</i>	30.0%	<i>All</i>	33.2%	<i>All</i>	33.4%	<i>All</i>	38.6%
	<i>Deg</i>	30.2%	<i>Deg</i>	33.6%	<i>Deg</i>	35.7%	<i>Deg</i>	36.5%	<i>Deg</i>	42.4%
	<i>Non</i>	26.9%	<i>Non</i>	25.8%	<i>Non</i>	28.9%	<i>Non</i>	27.5%	<i>Non</i>	28.2%
Asian	<i>All</i>	45.8%	<i>All</i>	49.0%	<i>All</i>	48.3%	<i>All</i>	49.1%	<i>All</i>	49.6%
	<i>Deg</i>	59.1%	<i>Deg</i>	64.0%	<i>Deg</i>	59.0%	<i>Deg</i>	59.9%	<i>Deg</i>	59.3%
	<i>Non</i>	31.9%	<i>Non</i>	37.7%	<i>Non</i>	36.3%	<i>Non</i>	36.1%	<i>Non</i>	32.9%
Caucasian	<i>All</i>	35.4%	<i>All</i>	35.2%	<i>All</i>	40.0%	<i>All</i>	41.1%	<i>All</i>	43.4%
	<i>Deg</i>	40.5%	<i>Deg</i>	42.9%	<i>Deg</i>	49.5%	<i>Deg</i>	47.9%	<i>Deg</i>	51.9%
	<i>Non</i>	32.3%	<i>Non</i>	31.0%	<i>Non</i>	30.3%	<i>Non</i>	34.7%	<i>Non</i>	28.7%
Hawaiian/ Pac. Islander	<i>All</i>	37.7%	<i>All</i>	46.4%	<i>All</i>	38.4%	<i>All</i>	45.4%	<i>All</i>	47.2%
	<i>Deg</i>	40.2%	<i>Deg</i>	51.0%	<i>Deg</i>	40.6%	<i>Deg</i>	56.1%	<i>Deg</i>	54.7%
	<i>Non</i>	35.5%	<i>Non</i>	43.5%	<i>Non</i>	35.1%	<i>Non</i>	34.5%	<i>Non</i>	30.9%
Hispanic	<i>All</i>	38.7%	<i>All</i>	39.1%	<i>All</i>	39.3%	<i>All</i>	44.8%	<i>All</i>	42.0%
	<i>Deg</i>	46.6%	<i>Deg</i>	49.4%	<i>Deg</i>	48.6%	<i>Deg</i>	50.6%	<i>Deg</i>	51.1%
	<i>Non</i>	34.1%	<i>Non</i>	32.9%	<i>Non</i>	30.9%	<i>Non</i>	39.6%	<i>Non</i>	26.1%
Native American	<i>All</i>	43.2%	<i>All</i>	48.5%	<i>All</i>	37.5%	<i>All</i>	48.3%	<i>All</i>	36.1%
	<i>Deg</i>	50.0%	<i>Deg</i>	55.6%	<i>Deg</i>	44.8%	<i>Deg</i>	36.0%	<i>Deg</i>	39.6%
	<i>Non</i>	39.1%	<i>Non</i>	40.0%	<i>Non</i>	26.7%	<i>Non</i>	64.1%	<i>Non</i>	25.0%
Unknown	<i>All</i>	35.2%	<i>All</i>	41.0%	<i>All</i>	33.9%	<i>All</i>	43.5%	<i>All</i>	37.5%
	<i>Deg</i>	45.3%	<i>Deg</i>	39.8%	<i>Deg</i>	44.9%	<i>Deg</i>	50.2%	<i>Deg</i>	46.2%
	<i>Non</i>	32.5%	<i>Non</i>	41.3%	<i>Non</i>	29.1%	<i>Non</i>	40.2%	<i>Non</i>	29.0%

Fall-to-Fall Persistence Rate by Gender

First-Year Students	F04-F05	rate	F05-F06	rate	F06-F07	rate	F07-F08	rate	F08-F09	rate
Female	<i>All</i>	36.9%	<i>All</i>	38.6%	<i>All</i>	40.1%	<i>All</i>	40.1%	<i>All</i>	43.5%
	<i>Deg</i>	44.3%	<i>Deg</i>	46.6%	<i>Deg</i>	48.7%	<i>Deg</i>	48.8%	<i>Deg</i>	51.2%
	<i>Non</i>	30.6%	<i>Non</i>	32.9%	<i>Non</i>	30.6%	<i>Non</i>	29.9%	<i>Non</i>	31.1%
Male	<i>All</i>	35.9%	<i>All</i>	37.3%	<i>All</i>	38.5%	<i>All</i>	44.3%	<i>All</i>	41.9%
	<i>Deg</i>	40.5%	<i>Deg</i>	43.9%	<i>Deg</i>	47.0%	<i>Deg</i>	48.0%	<i>Deg</i>	50.5%
	<i>Non</i>	33.7%	<i>Non</i>	34.3%	<i>Non</i>	31.0%	<i>Non</i>	41.4%	<i>Non</i>	25.9%

Student Persistence Fall to Fall

Persistence is a measure of endurance by students in their continued progress toward the completion of an educational goal or training objective.

It measures the percentage of students enrolled in a fall semester who re-enroll in the subsequent fall semester.

All = First-year students are students who start CSN in the summer or fall semester.

For this report, excludes those who graduate before the second year fall semester.

Deg = Degree-seeking students have declared a major or the intent to transfer. Only degree-seeking students are eligible for financial aid.

Non = Non-degree-seeking students have not declared a major

or they have declared the intent to take classes for basic skills, job advancement, or personal enrichment.

**College of Southern Nevada - Course Retention Rates
All Students Retained in Courses**

Course Retention (Grades A-F, P, NP)

All Students	F05	F06	F07	F08	F09
	75.3%	75.8%	77.1%	80.6%	82.4%

Course Retention by Ethnicity

All Students	F05	F06	F07	F08	F09
African American	70.1%	70.3%	71.5%	77.5%	76.7%
Asian	77.4%	77.6%	77.8%	82.8%	84.3%
Caucasian	75.4%	76.7%	77.7%	81.2%	83.1%
Hawaiian/Pacific Islander	74.8%	68.9%	72.9%	78.7%	80.0%
Hispanic	76.6%	76.1%	77.9%	80.5%	83.3%
Native American	79.3%	71.0%	73.8%	81.4%	85.1%
Multi-ethnic	n/a	n/a	n/a	n/a	80.4%
Unknown	74.9%	76.0%	78.5%	79.2%	82.7%

Course Retention by Gender

All Students	F05	F06	F07	F08	F09
Female	75.7%	75.8%	76.6%	81.1%	82.2%
Male	74.7%	75.7%	77.6%	80.1%	82.6%

Student Course Retention

The retention rate measures how well an instructor or institution is performing in retaining students in the learning process through the completion of the course, regardless of the achievement level of students.

Course Retention = Grades A-F, P, NP

**College of Southern Nevada - Course Retention Rates
First-Year Students Only**

Course Retention (Grades A-F, P, NP)

First-Year Students	F05	F06	F07	F08	F09
	77.0%	76.5%	78.6%	82.3%	83.1%

Course Retention by Ethnicity

First-Year Students	F05	F06	F07	F08	F09
African American	69.0%	68.3%	69.6%	76.8%	71.3%
Asian	82.7%	82.5%	81.9%	87.4%	88.4%
Caucasian	75.8%	77.5%	79.4%	81.9%	83.4%
Hawaiian/Pacific Islander	78.7%	67.1%	77.7%	83.6%	80.9%
Hispanic	80.6%	77.5%	79.8%	81.1%	84.7%
Native American	79.6%	64.9%	76.7%	78.7%	84.3%
Multi-ethnic	n/a	n/a	n/a	n/a	82.3%
Unknown	75.7%	75.8%	79.3%	79.7%	83.2%

Course Retention by Gender

First-Year Students	F05	F06	F07	F08	F09
Female	78.0%	77.4%	78.5%	82.4%	82.5%
Male	75.7%	75.3%	78.7%	80.8%	82.4%

Student Course Retention

The retention rate measures how well an instructor or institution is performing in retaining students in the learning process through the completion of the course, regardless of the achievement level of students.

Course Retention = Grades A-F, P, NP

**College of Southern Nevada - Course Success Rates
All Students Succeeding in Courses**

Course Success (Grades A-C, P)

All Students	F05	F06	F07	F08	F09
	63.8%	63.6%	65.0%	68.2%	69.7%

Course Success by Ethnicity

All Students	F05	F06	F07	F08	F09
African American	54.8%	55.3%	54.7%	60.2%	58.8%
Asian	66.5%	66.3%	66.5%	71.0%	71.5%
Caucasian	65.5%	66.1%	67.7%	70.6%	72.4%
Hawaiian/Pacific Islander	60.4%	52.8%	57.1%	61.9%	65.3%
Hispanic	62.4%	61.2%	63.5%	66.2%	69.4%
Native American	67.0%	58.1%	62.9%	68.6%	72.8%
Multi-ethnic	n/a	n/a	n/a	n/a	66.2%
Unknown	63.6%	64.1%	66.8%	67.8%	72.3%

Course Success by Gender

All Students	F05	F06	F07	F08	F09
Female	64.8%	64.2%	64.3%	68.1%	69.0%
Male	75.7%	62.7%	65.9%	68.2%	70.5%

Student Course Success

The success rate measures how well students are learning, as measured by final course grades.

Course Success = Grades A-C, P

**College of Southern Nevada - Course Success Rates
First-Year Students Only**

Course Success (Grades A-C, P)

First-Year Students	F05	F06	F07	F08	F09
	62.7%	61.1%	63.8%	68.3%	70.5%

Course Success by Ethnicity

First-Year Students	F05	F06	F07	F08	F09
African American	49.9%	50.9%	49.6%	56.7%	50.7%
Asian	70.8%	70.2%	69.7%	75.7%	75.2%
Caucasian	63.1%	63.5%	67.2%	69.3%	71.3%
Hawaiian/Pacific Islander	64.2%	47.6%	60.8%	65.2%	64.5%
Hispanic	63.4%	58.4%	61.6%	64.5%	68.2%
Native American	66.2%	50.2%	65.2%	62.4%	71.2%
Multi-ethnic	n/a	n/a	n/a	n/a	63.7%
Unknown	63.0%	61.1%	64.7%	65.5%	70.5%

Course Success by Gender

First-Year Students	F05	F06	F07	F08	F09
Female	64.5%	62.8%	63.7%	67.7%	67.1%
Male	78.0%	58.9%	63.9%	66.3%	68.3%

Student Course Success

The success rate measures how well students are learning, as measured by final course grades.

Course Success = Grades A-C, P