



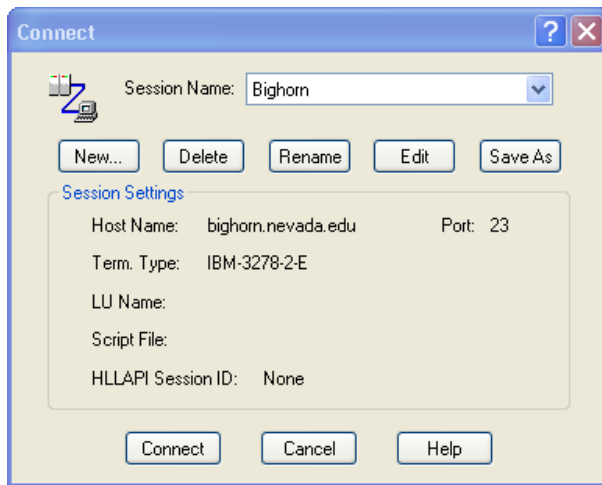
Bighorn to Mustang Transition

Greetings! These step-by-step instructions will allow users to change their mainframe logins from Bighorn to Mustang in just a few stress-free steps.

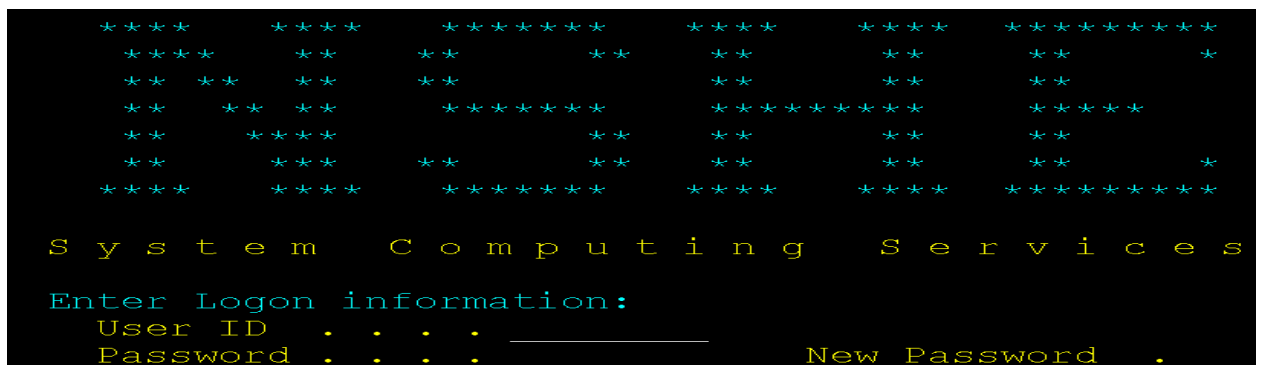
There are two ways users can connect to the mainframe. Before you begin, you'll need to determine which method you are using. To do so, find your **QWS3270 Secure** icon on your desktop and double-click it.



- **Option 1:** If you see a Connect window (shown below), you are using the “Connect Dialog” method, and should **continue on the next page (Connect Dialog Method)**.

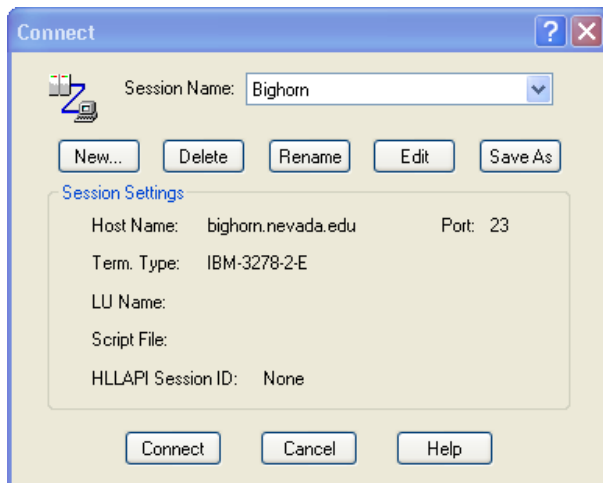


- **Option 2:** If you see only the NSHE logon screen (shown below), you are using the auto-connect method, and should **continue on page eight (Auto-Connect Method)**.

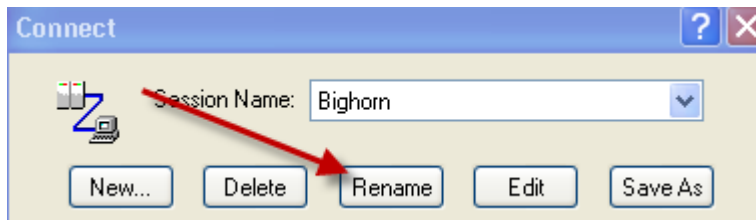


## Connect Dialog Method

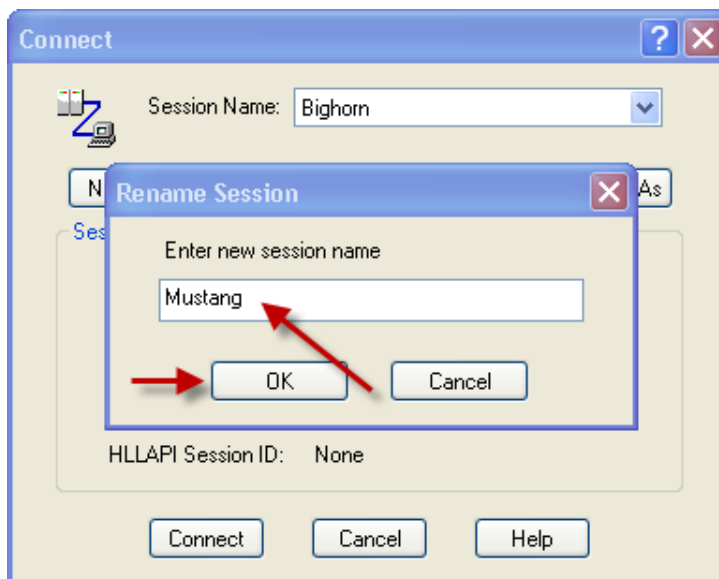
The Connect window should already be displayed.



1. Click **Rename**.

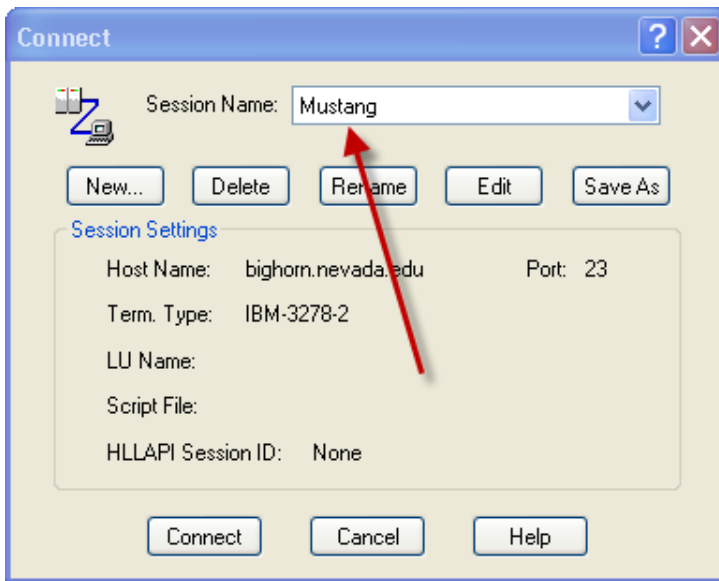


2. You will then be prompted to enter a name for the new session. Enter **Mustang** in the "new session name" field.

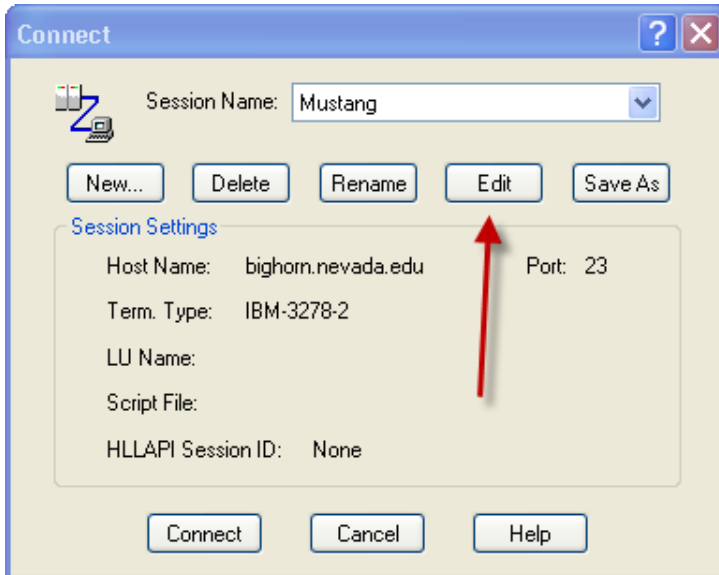


3. Now click the OK button.

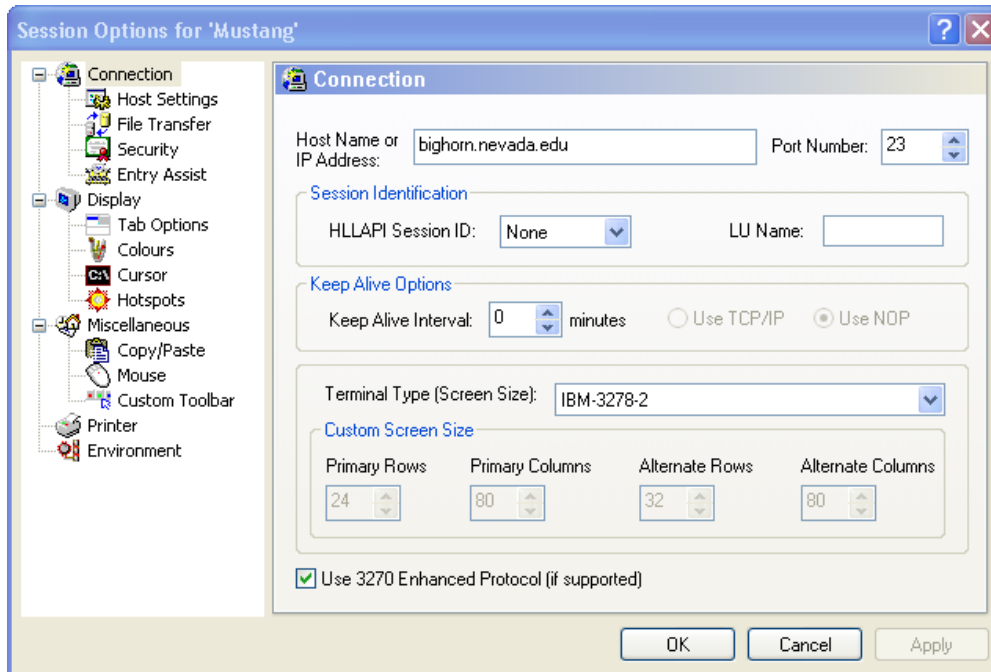
The Connect window displayed should now show “Mustang” as the session name.



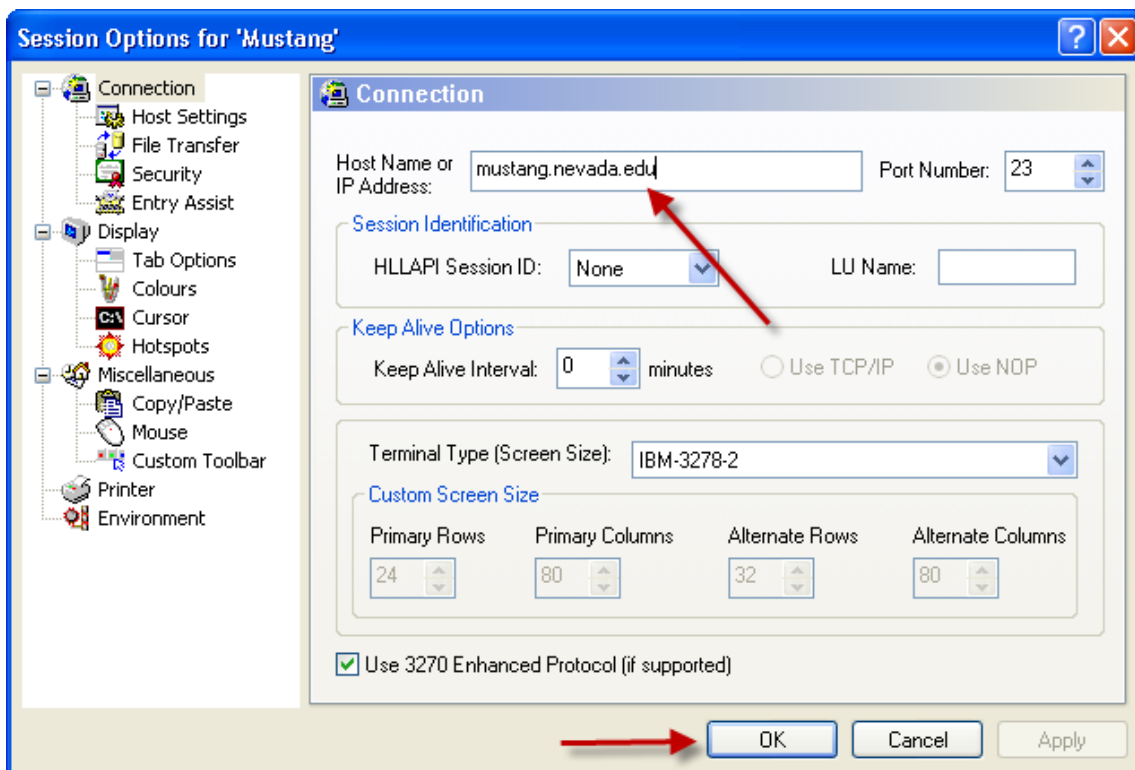
4. Next, click **Edit**.



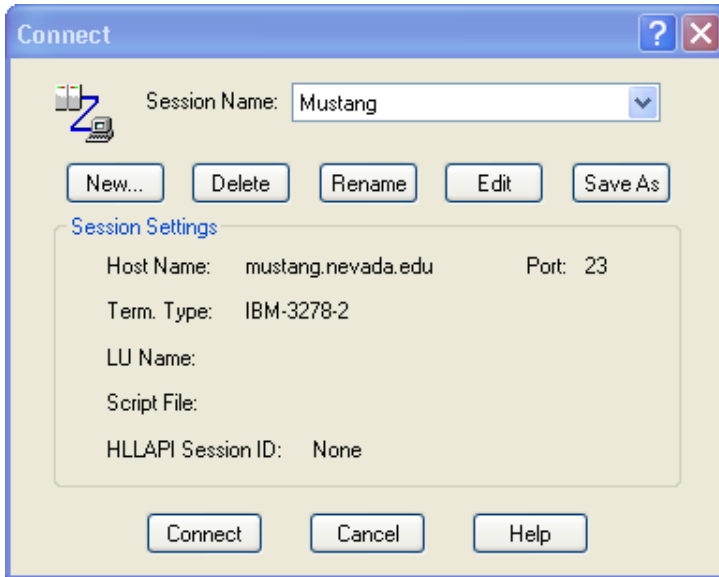
You should now see a window with Session Options for 'Mustang' (example below).



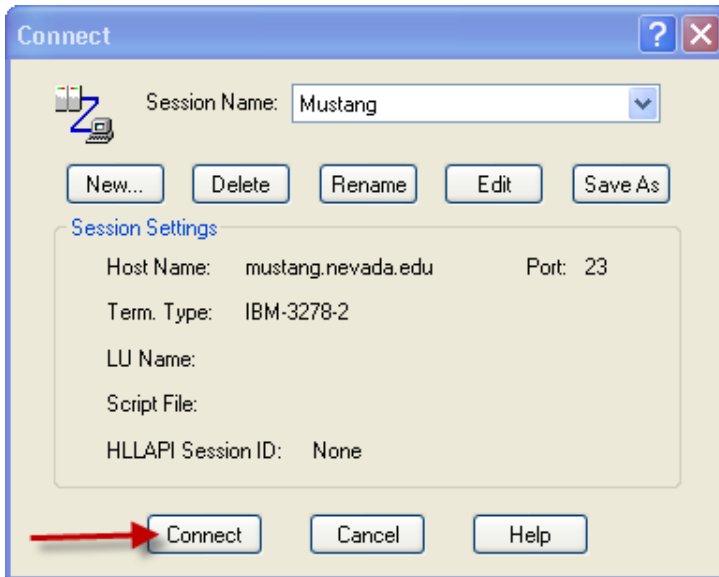
5. Enter **mustang.nevada.edu** in the Host Name or IP Address.



- Now click on OK.  
You should now be re-directed to the original Connect window.



- Make sure that your Session Name is always Mustang before attempting to connect.  
Click **Connect**.



You are now connected!

Note that the top of the NSHE logon screen says **Mustang** and not Bighorn.

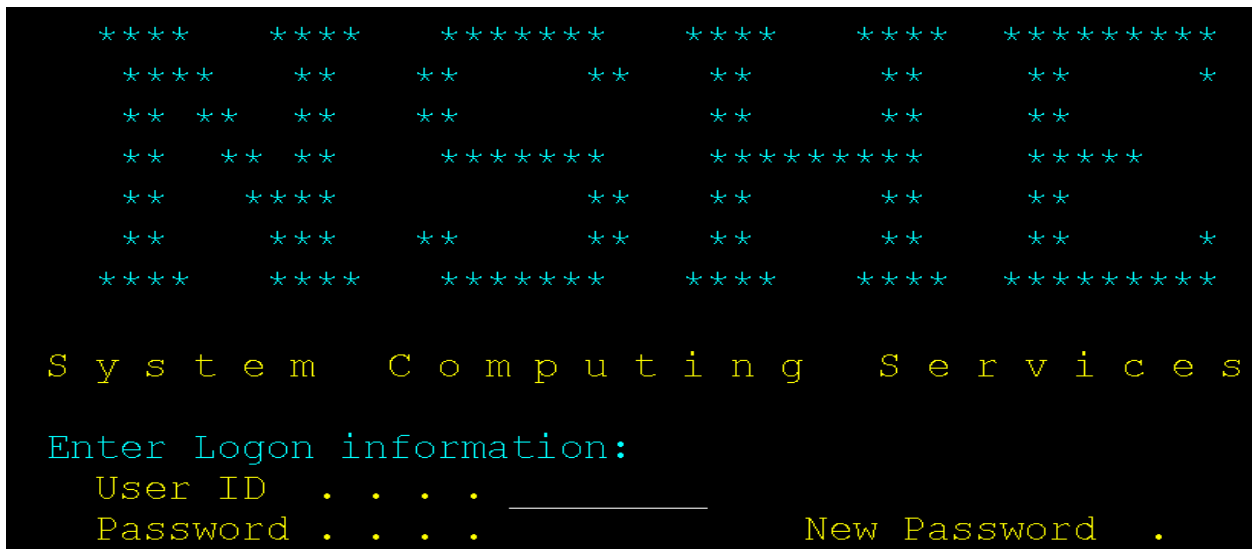


W e l c o m e t o Mustang

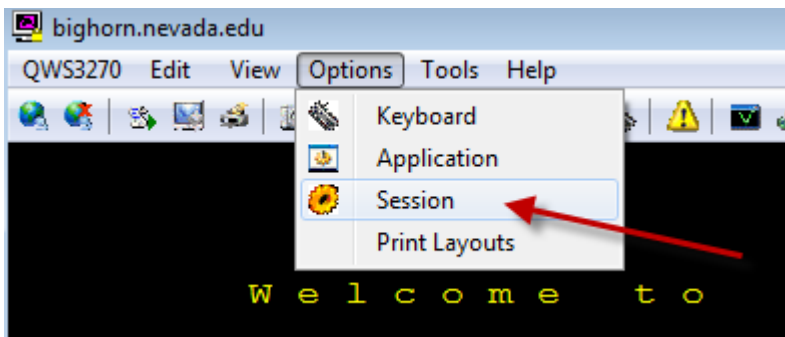
**You are finished with the “Connect Dialog” setup!**

## Auto-Connect Method

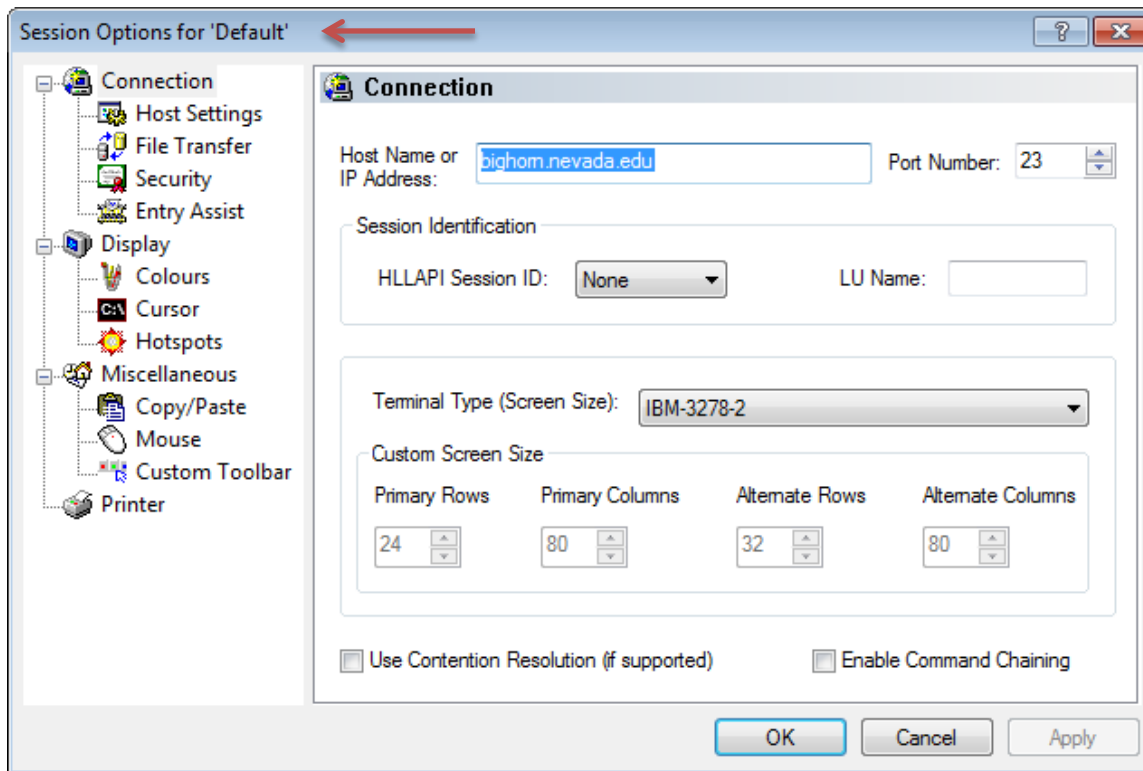
You should already see the NSHE logon page.



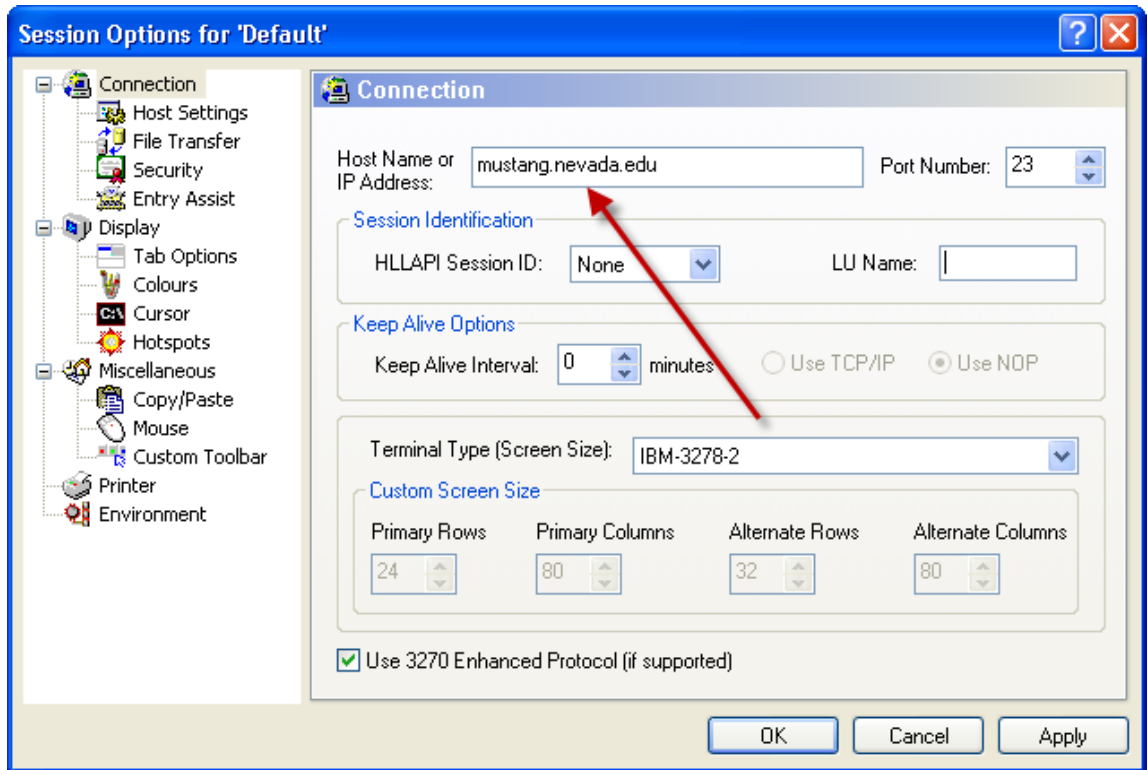
1. Select **Options** (located on the top toolbar) and then **Session**.



You should now see Session Options for 'Default' as shown below.

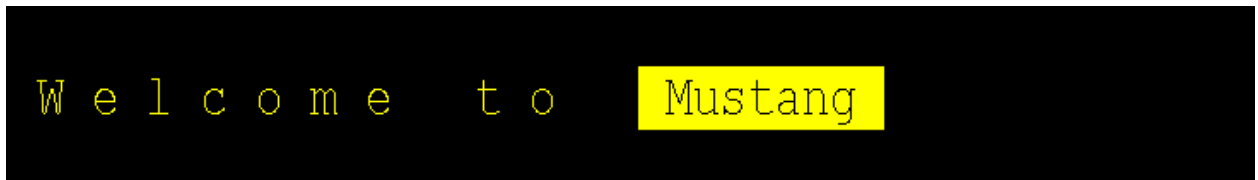


2. Change the Host Name or IP Address to **mustang.nevada.edu**.



3. Click **OK**.  
The Session Options window will close.
4. Close **QWS3270 Secure** completely (use the menu or click the “X” in the upper right corner).  
You need to do this for the changes to take effect.
5. Double-click on your **QWS 3270 Secure** icon again.

You should now see **Mustang** located at the top of the NSHE logon screen and should now automatically connect to Mustang.



**You are finished with the “Auto-Connect” setup!**