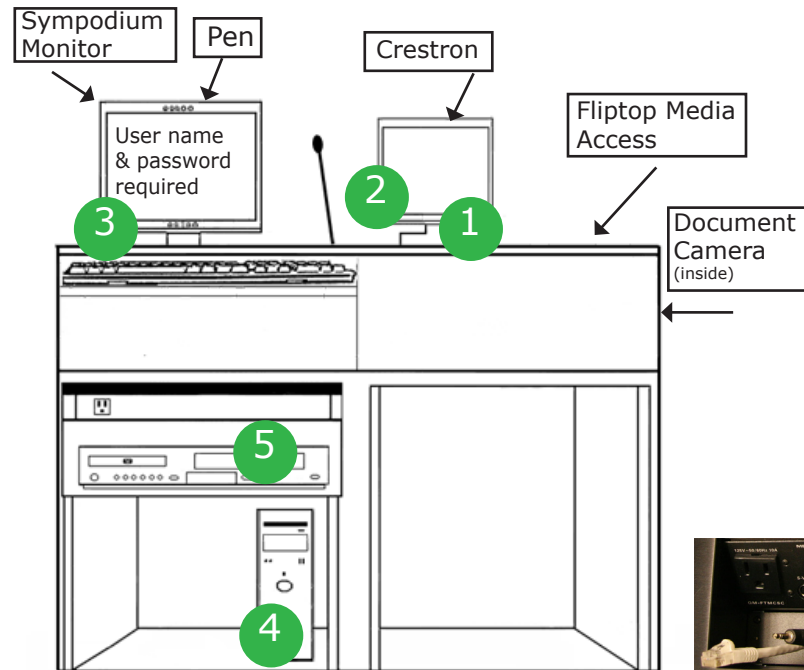


Power On

1. Tap **Crestron** screen to wake unit. It may take a few seconds to respond to any command.
2. Press **ON** button on the **Crestron** screen to power on projector and lower screen.
3. Power on Sympodium monitor.
4. Power on PC and login, as needed.
5. Power on DVD/VCR, as needed.



Power Off

1. Press the OFF button on the **Crestron** to power off projector and raise screen.
2. Log off the computer.
3. Turn off Sympodium monitor.
4. Put away Sympodium Pen.
5. Press power buttons on DVD/VCR to power off.

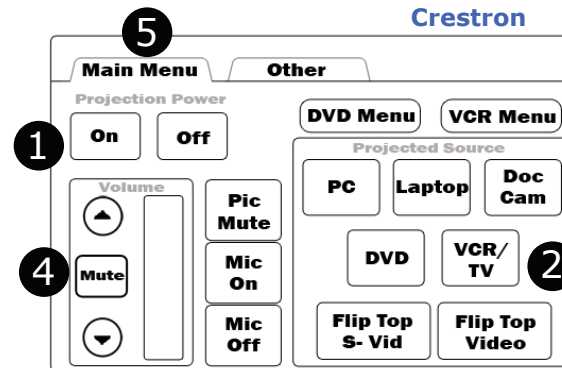


Laptop connection, located on top of teaching station. Look for the VGA input in fliptop media access.

Controlling the Equipment

Controlling with the Crestron:

1. Control projection screen with ON/OFF buttons on Main Menu.
2. Tap the name of the device to display (ex: tap *PC* for computer).
3. Control VCR and DVD by tapping Play, Fast Forward, and Pause icons on menus. *Not pictured.*
4. Control volume using control on Main Menu.
5. Return to main **Crestron** screen by tapping Main Menu.



Controlling the Sympodium:

1. Use mouse when only opening files.
2. Use pen to annotate and mark-up files and web pages using SmartBoard software. Write directly on monitor with Sympodium pen.
3. Pen is located at top of monitor, in the center, just behind it. Look for the attached string.
4. To open SmartBoard software, right click on SmartBoard icon in system tray. Choose "Start Center."