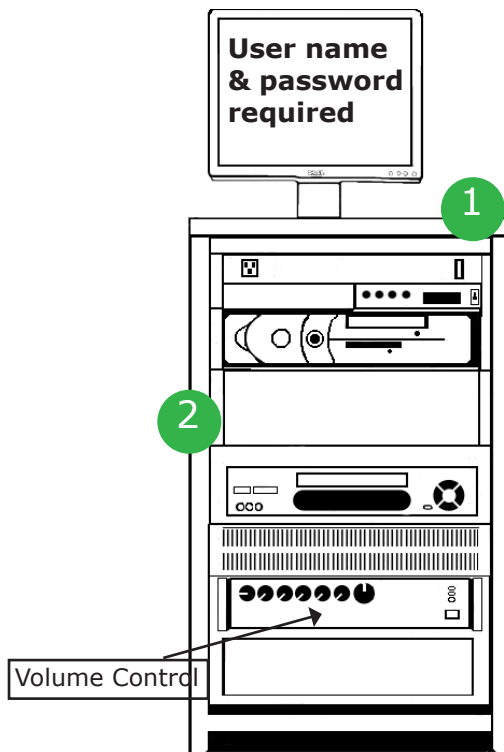
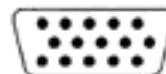


## Start

1. Toggle master switch on main power panel to ON position for power to the unit
2. Turn on DVD/VCR and PC, as needed
3. Press **POWER ON** button on the remote for projector
4. Press the switch on the wall to lower the screen (usually located near the screen or light switches)



Laptop connection, located on either side of unit. Look for the VGA input.



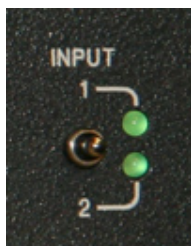
## End

1. Press and hold the OFF button on the remote for a minimum of three seconds to power off the projector
2. Log off the computer
3. Press power buttons on DVD/VCR to power off
4. Toggle master switch on main power panel to OFF position

## Controlling the Equipment

### PC Switch:

1. To view the PC image, toggle the switcher to position #1
2. Laptop image, toggle the switcher to position #2



### Volume Control:

1. On the amplifier, turn the master volume control knob to about mid range. (Between the 9 o'clock and 12 o'clock positions.)
2. Turn the VCR/DVD, the PC, or the Laptop volume control knob to the desired level.

### Controlling the projector:

1. **POWER ON** and OFF for projector
2. Display source: Video, RGB1 (main PC), RGB2
3. Laser: press and hold to activate a laser pointer
4. Keystone: corrects trapezoidal distortion, make an image square
5. Magnify: increase size of content in center of screen

