

About Our Program

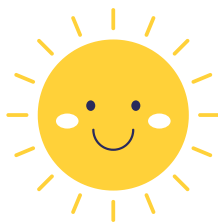
Discover CSN's nationally accredited Early Childhood Education (ECE) Lab Program—where learning begins and futures are built. CSN's North Las Vegas campus provides care and education for children ages 3 months to 5 years.

The program offers a safe, nurturing environment that supports learning through play.

Key goals include:

- Exceptional care and curriculum that nurtures curiosity, creativity, and confidence
- Real-world teaching experience for CSN students pursuing careers in education and child development
- Family-first programming with hands-on involvement, workshops, and support
- Community connections that link families to valuable resources and services

.....
This program is nationally accredited by NAEYC for exceeding quality standards in early childhood education and holds a 5-star rating from Nevada's Silver State Stars QRIS program.
.....



A model of excellence for the care and education of children

Hours & Operations

Open 7:30 am to 5:30 pm, Monday through Friday.

There is no drop off after 9:15 am

Year round operation with closures for state holidays, monthly professional development days, CSN two week winter break, CSN spring break, and professional development week in August.

2025-2026 ECE Program Calendar



Contact Us:



702-651-4004



ECELabSchool@csn.edu



CSN North Las Vegas Campus
3200 E. Cheyenne Ave.
Las Vegas, NV 89030
(Sort code: NLVS I49)



Early Childhood Education Lab Program



www.csn.edu/preschool



Support for CSN Parents

Parents enrolled in at least 6 credits (fall/spring) or 3 credits (summer) may receive:

- 25% off their child’s tuition
- Flexible scheduling (based on availability; minimum two days per/week)
- No fees for schedule changes due to CSN class conflicts
- Option to pause enrollment during CSN breaks without penalty

Other Tuition Support

CCAMPIS

Available for students enrolled in 6+ credits with a 2.0 GPA who attend monthly meetings. Limited spots for students with qualifying incomes (e.g. Pell Grant) and who are first-gen or have a documented disability. Must enroll with TRIO.
www.csn.edu/trio

Tribal Childcare

For Clark County families who are registered as, or descendant of, a Native American. Must not be earning subsidies from another organization and assets must be under \$1,000,000.
www.mboptribalchildcare.org

Child Care & Development Program

For families who meet a specific income requirement and have a qualified reason for the need of childcare.
www.dwss.nv.gov

Nevada Ready Pre-K

For families of three- and four-year-old children who meet a specific income requirement.
Email: info@uwsn.org

Weekly Tuition Rates

Weekly Fees	2 days (T, Th)	3 days (M, W, F)	5 days (M-F)
Infant/Young Toddlers	\$148	\$208	\$284
Older Toddlers/2 Year Olds	\$140	\$191	\$263
Preschoolers (3-5 year olds)	\$129	\$174	\$256

- Our one-time registration fee is \$150 per child or \$200 per family. Please note that this fee is non-refundable.
- Weekly tuition is due on the first day of each week, even if your child isn’t able to attend that week.
- There’s no tuition charged during scheduled school closures — we hope you enjoy the break!
- To help us keep things running smoothly, we encourage families to stay current on their accounts. If a balance goes unpaid for more than two weeks or exceeds \$400, we may need to pause enrollment until it’s resolved.



Application & Enrollment

Enrollment is open to the community, including CSN faculty, staff, and students.

- Applications are accepted year-round
- Openings are filled by application date
- Current families and siblings get priority for re-enrollment

Children are placed in age groups based on their age as of August 1:

- Infants/Young Toddlers: 3–24 months
- Older Toddlers: 24 months–3 years
- Preschoolers: 3–5 years

Full-time enrollment options include:

- Two days (T/TH)
- Three days (M/W/F)
- Five days (M–F)

APPLY NOW

